

Positive Behaviour Policy

Information for Parents

At Greenfields we believe it is important to work together to build good behaviour.
This leaflet explains some of the ways in which we encourage good behaviour in school.

Introduction

All adults and children at Greenfields have a part to play in promoting high standards of behaviour. To help we have a code of behaviour which is reinforced by different levels of reward and consequence.

This helps us to create and maintain a secure and positive learning environment for our children and adults.

Rights and Responsibilities

We value each and every individual within our community and encourage their contribution to shaping a welcoming, safe and fair learning community for all.

The SEAL curriculum resource is used to develop a learning community where social, emotional and behavioural skills can flourish. Children learn how they can make the classroom and school a safe and fair place for everyone and that it is not OK for other people to make it unsafe or unfair.

The Greenfield's Code

We have an agreed code which helps us work together for excellence to ensure that Greenfields is a successful school.

The code consists of six rules to remind everyone how to behave:

1. **We will be ready to learn and always do our best** – we will not stop other people from learning
2. **We will listen to others and show respect** – we will not interrupt when someone else is speaking and we are not rude
3. **We will be kind, thoughtful and helpful** – we will not hurt other people's feelings with words or actions
4. **We will take care of our things and respect other people's property and the school environment** – we will not break or damage equipment or belongings
5. **We will tell the truth and be honest and take responsibility for our own actions or behaviour** - we will not lie or blame other people for what we have done
6. **We will play and work carefully making sure everyone is safe** – we will not physically hurt others or play roughly and thoughtlessly.

Each term we review the Greenfield's Code so that all children and adults are clear about what we expect and the way we should behave when learning or playing.

You will see the Greenfield's Code displayed around the school.

Rewards

We have a whole school system of rewards in place for children who follow the Greenfield's Code. These include:

- Free Learning and ICE time
- Stickers and Award Cards
- Learning Star Awards
- 'Ask me why...?' stickers and texts home
- Class rewards for rainbow behaviour for learning
- Finer Diner golden tickets for children who show good manners in the dining room
- Attendance Certificates
- Weekly Achievement Assemblies
- Achievement and Star Certificates
- Wibbly Wobblies

Each class teacher also has their own system of individual and whole class rewards in place. Together these have been carefully designed to reward and celebrate good behaviour and behaviour for learning and encourage children to make changes where needed.

Unacceptable Behaviour

Despite focusing on rewarding positive behaviour we recognise that, at times, some children may choose not to follow the Greenfield's Code.

We work hard to :

- apply consequences in a balanced way
- focus on the act
- not label the child

Children are helped to understand why certain behaviours are not acceptable. If they are finding it difficult to follow the Greenfield's Code we will talk to you about their behaviour and ask for your support in reinforcing good behaviour and behaviour for learning. At time we may offer some specific support or intervention to help children work through difficulties they are unable to address themselves. We want you to feel involved in working with the school to help manage your child's behaviour.

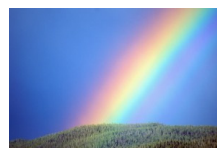
The Sunshine Chart

Each class has a Sunshine Chart which celebrate positive behaviour and behaviour for learning and manages low level behaviour problems.

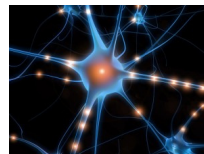
Every day the children start on the **Sunshine** and will remain here if they follow the Greenfield's Code and complete their work appropriately.



Children who behave particularly well and/or show excellent behaviour for learning will move from the sunshine to the **Rainbow**. If all the class achieve the rainbow level they will earn a coin for the Pot of Gold. Five coins will earn a whole class reward of additional Free Learning or ICE time.



When children show exemplary behaviour or behaviour for learning they will, achieve the **learning star** level. At this point they will bring their work to Mrs Cook who will send a text home to let you know of their achievement. They also wear a 'Tell me why...?' sticker so that other children and adults can ask them what they have achieved.



When children break the Greenfield's Code...

When children are stopping others learning through low level disruptive behaviour they will be reminded what behaviour is expected. This is the Cloud level or level 1.

If they cannot modify their behaviour they will be move to the Rain Cloud or level 2 and asked to move to a different part of the class so that the other children can continue to learn. On the playground they will be given a Cool Down Card and asked to come inside for five minutes to calm down and think about their behaviour.

If this sanction does not stop the inappropriate behaviour children will be reach the Storm Cloud (or level 3) and be asked to leave the classroom to go to their partner class with a Time Away Card where they will be expected to complete a Think Sheet to reflect on what aspects of their behaviour have been unacceptable and how they can change this in the future. On the playground they will be also be given a Time Away Card and asked to come inside to complete a Think Sheet and may miss the remainder of their playtime.

At each stage your child will be given every opportunity to return to the sunshine level by showing that they have changed their behaviour.

We will inform you if your child has a level 3 behaviour incident either in the classroom or on the playground.

Serious incidents of poor behaviour are dealt with at the Lightening level (or level 4/5). These incidents go straight to Mrs Cook or Mrs Rafferty and you will be informed about the issues. You may in extreme instances be asked to come into school and discuss how we can plan to support your child in changing their behaviour. In extreme instances your child may be given a fixed-term exclusion.